



- Aluminium electronic enclosure for MCR technology
- Variable length version using profile technology
- Single or double-skinned enclosure construction with heat sink option

### Technical data

**Material:**

DIN EN 573 EN AW-AMgSi

**Ingress protection:**

IP 40 to EN 60529

**Painting:**

powder coating

**Colour:**

RAL 9005, jet black

**Temperature range:**

-40°C to +100°C

**Included in delivery**

Enclosure with two aluminium lids, screwed.

# Multitronic TS/TS-F

## Programme range

Enclosure type	Order No.	Ext. encl. dimensions W x H x T (mm)	Weight (g)	max. PCB dimensions in mm	DIN rails	Wall mounting	Free print terminal/ plug connector access	Closed design
TS 111	<b>77.01 11 00</b>	46 x 105 x 72	197	42,6 x 100	•			•
TS 111-F	<b>77.41 11 00</b>	46 x 105 x 72	197	42,6 x 100	•			•
TS 112	<b>77.01 12 00</b>	46 x 105 x 72	220	42,6 x 100		•		•
TS 112-F	<b>77.41 12 00</b>	46 x 105 x 72	220	42,6 x 100		•		•
TS 121	<b>77.01 21 00</b>	46/76 x 105 x 61	630	42,6/72,6 x 100	•		•	
TS 121-F	<b>77.41 21 00</b>	46/76 x 105 x 61	630	42,6/72,6 x 100	•		•	
TS 122	<b>77.01 22 00</b>	46/76 x 105 x 61	240	42,6/72,6 x 100		•	•	
TS 122-F	<b>77.41 22 00</b>	46/76 x 105 x 61	240	42,6/72,6 x 100		•	•	
TS 141	<b>77.01 41 00</b>	46/105 x 105 x 57	410	42,6/100,6 x 100	•		•	
TS 141-F	<b>77.41 41 00</b>	46/105 x 105 x 57	410	42,6/105,6 x 100	•		•	
TS 142	<b>77.01 42 00</b>	46/105 x 105 x 57	300	42,6/100,6 x 100		•	•	
TS 142-F	<b>77.41 42 00</b>	46/105 x 105 x 57	300	42,6/100,6 x 100		•	•	
TS 221	<b>77.02 21 00</b>	76 x 105 x 51	300	72,6 x 100	•			•
TS 221-F	<b>77.42 21 00</b>	76 x 105 x 51	300	72,6 x 100	•			•
TS 222	<b>77.02 22 00</b>	76 x 105 x 51	224	72,6 x 100		•		•
TS 222-F	<b>77.42 22 00</b>	76 x 105 x 51	224	72,6 x 100		•		•
TS 231	<b>77.02 31 00</b>	76 x 105 x 64,5	700	72,6 x 100	•			•
TS 231-F	<b>77.42 31 00</b>	76 x 105 x 64,5	700	72,6 x 100	•			•
TS 232	<b>77.02 32 00</b>	76 x 105 x 64,5	235	72,6 x 100		•	•	•
TS 232-F	<b>77.42 32 00</b>	76 x 105 x 64,5	235	72,6 x 100		•	•	•
TS 331	<b>77.03 31 00</b>	76 x 105 x 78	270	72,6 x 100	•			•
TS 331-F	<b>77.43 31 00</b>	76 x 105 x 78	270	72,6 x 100	•			•
TS 332	<b>77.03 32 00</b>	76 x 105 x 78	290	72,6 x 100		•		•
TS 332-F	<b>77.43 32 00</b>	76 x 105 x 78	290	72,6 x 100		•		•
TS 441	<b>77.04 41 00</b>	105 x 185 x 45	700	100,6 x 180	•			•
TS 441-F	<b>77.44 41 00</b>	105 x 185 x 45	700	100,6 x 180	•			•
TS 442	<b>77.04 42 00</b>	105 x 185 x 45	420	100,6 x 180		•		•
TS 442-F	<b>77.44 42 00</b>	105 x 185 x 45	420	100,6 x 180		•		•
TS 461	<b>77.04 61 00</b>	105 x 185 x 66	660	100,6 x 180	•			•
TS 461-F	<b>77.44 61 00</b>	105 x 185 x 66	660	100,6 x 180	•			•
TS 462	<b>77.04 62 00</b>	105 x 185 x 66	480	100,6 x 180		•	•	•
TS-462-F	<b>77.44 62 00</b>	105 x 185 x 66	480	100,6 x 180		•	•	•
TS 662	<b>77.06 62 00</b>	105 x 185 x 87	730	100,6 x 180		•		•
TS-662-F	<b>77.46 62 00</b>	105 x 185 x 87	730	100,6 x 180		•		•

## Accessories

Spare snap foot for TS 32 and TS 35 for snapping to enclosure	<b>77.00 35 00</b>
Snap foot plastic, for rail mounting on TS 35	<b>77.00 35 01</b>
Metal snap foot (set = 2 pcs.) for TS 35 for screwing onto enclosure	<b>77.00 36 00</b>
Table feet (set, self adhesive, black)	<b>10.07 00 19</b>
Mounting feet (2 pcs.), grey	<b>07.70 00 81</b>

*Kind of mounting*



Picture 1  
Multitronic TS xx1  
with snap foot



Picture 2  
Multitronic TS xx1-F  
Front plate version with snap foot

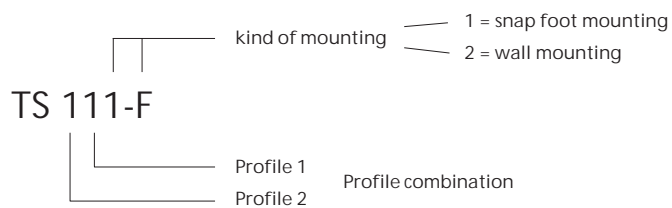


Picture 3  
Multitronic TS xx2  
Wall mounting



Picture 4  
Multitronic TS xx2-F  
Front plate version for wall mounting

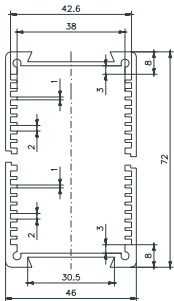
Mounting version	mounting side	type									
Snap foot mounting	profile side	TS 111	TS 221	TS 231	TS 331	TS 441	TS 461		TS 121	TS 141	pict. 1
Snap foot mounting	front plate side	TS 111-F	TS 221-F	TS 231-F	TS 331-F	TS 441-F	TS 461-F		TS 121-F	TS 141-F	pict. 2
Wall mounting	profile side	TS 112	TS 222	TS 232	TS 332	TS 442	TS 462	TS 662	TS 122	TS 142	pict. 3
Wall mounting	front plate side	TS 112-F	TS 222-F	TS 232-F	TS 332-F	TS 442-F	TS 462-F	TS 662-F	TS 122-F	TS 142-F	pict. 4



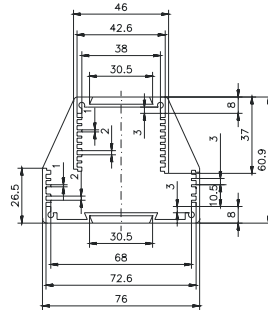
# Multitronic TS / TS-F

## Dimensions

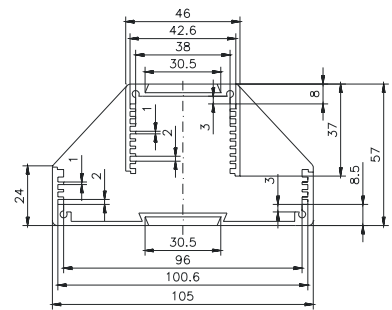
Standard profile length 100 mm



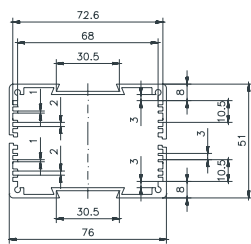
Multitronic TS 11X



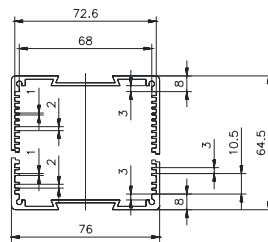
Multitronic TS 12X



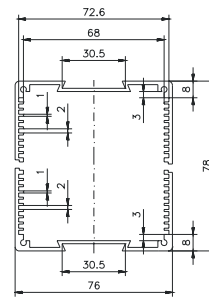
Multitronic TS 14X



Multitronic TS 22X

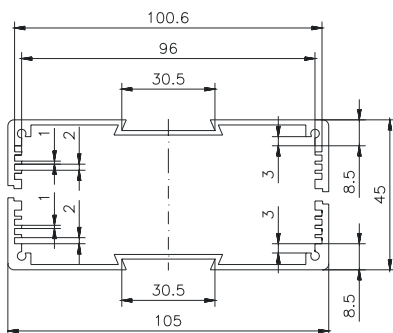


Multitronic TS 23X

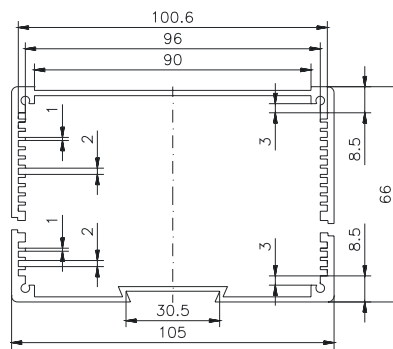


Multitronic TS 33X

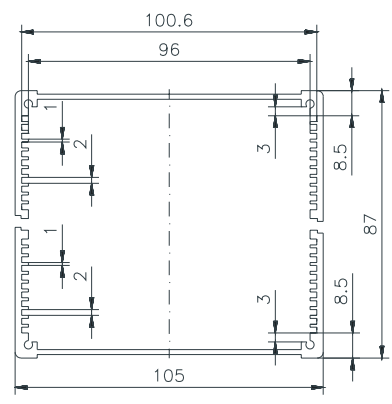
Standard profile length 180 mm



Multitronic TS 44X



Multitronic TS 46X

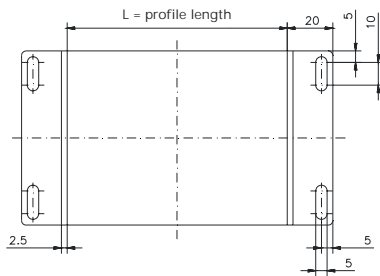


Multitronic TS 662

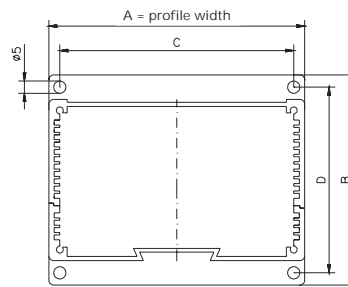
**Dimensions**

Type	A	B	C	D
77.41 12 00	72	66	64	56
77.41 22 00	76	81	68	71
77.41 42 00	105	77	96	67
77.42 22 00	76	71	68	61
77.42 32 00	76	84,5	68	74,5
77.43 32 00	76	98	68	88
77.44 42 00	105	65	96	55
77.44 62 00	105	86	96	76
77.46 62 00	105	107	96	97

Multitronic TS 111 to 662 with lid



Multitronic TS 112-F to 662-F

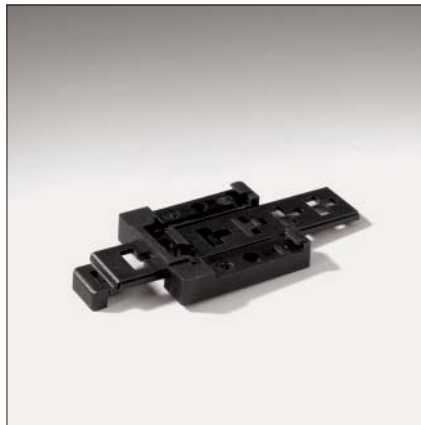


**Accessories**



**Spare snap foot**  
for insert into dovetail groove suitable for TS 32 and TS 35

Order No. **77.00 35 00**



**Plastic snap foot**  
for rail mounting on TS 35

Order No. **77.00 35 01**



**Metal snap foot set (2 pcs.)**  
for screwing on lid / front plate suitable for TS 35

Order No. **77.00 36 00**

