



- EMC Aluminium enclosure system for MCR technology
- Integrated guide slots for PCB's
- External mounting slots with spring nuts

### Technical data

**Material:**

DIN EN 573 EN AW-ALMgSi

**Ingress protection:**

IP 40 to EN 60529

**Painting:**

powder coating

**Colour:**

RAL 9005, jet black

**Temperature range:**

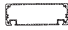
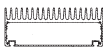
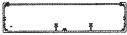

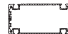
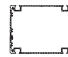
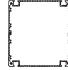
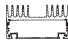
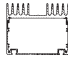
-40°C to +100°C

**Included in delivery**

Enclosure with two aluminium lids, screwed.

# Multitronic

## Programme range

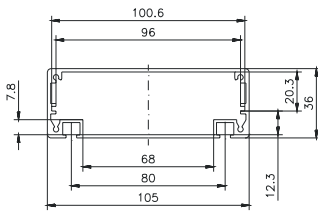
Type	Order No.	External enclosure dimensions W x L x H (mm)	Weight (g)	Version	Profile	max. PCB-dimensions (mm)
Multitronic 1 	<b>77.31 00 00</b>	105 x 185 x 36	480	1 PCB guide 2 mounting slots	1	100 x 180
Multitronic 2 	<b>77.32 00 00</b>	165 x 185 x 65	1378	2 PCB guides integrated heat sink surfaces 2 mounting slots	1	160 x 180
Multitronic 3 	<b>77.33 00 00</b>	208 x 185 x 54	820	4 PCB guides front plate sheet aluminium lid with fixing fins	1	2 x 57 x 180 1 x 87 x 180 1 x 204 x 180
Multitronic 4 	<b>77.34 00 00</b>	190 x 185 x 51	500	6 PCB guides arched shape fixing fin on enclosure body	1	160 x 180
Multitronic 11 	<b>77.11 00 00</b>	105 x 185 x 50	500	2 PCB guides 4 mounting slots	2	100 x 180
Multitronic 12 	<b>77.12 00 00</b>	105 x 185 x 80	674	3 PCB guides 4 mounting slots	2	100 x 180
Multitronic 13 	<b>77.13 00 00</b>	105 x 185 x 110	660	4 PCB guides 4 mounting slots	2	100 x 180
Multitronic 21 	<b>77.21 00 00</b>	105 x 185 x 56	790	1 PCB guide upper profile as heat sink 2 mounting slots	2	100 x 180
Multitronic 22 	<b>77.22 00 00</b>	105 x 185 x 86	904	2 PCB guides upper profile as heat sink 2 mounting slots	2	100 x 180
Special length	<b>77.99 99 99 8</b>	for all profiles				

## Accessories

External mounting brackets (4 pcs.)	<b>77.00 01 00*</b>
Snap foot, plastic, for rail mounting on TS 35	<b>77.00 35 01</b>
Table feet (set, self-adhesive, black)	<b>10.07 00 19</b>
Mounting feet (2 pcs.), grey	<b>07.70 00 81</b>

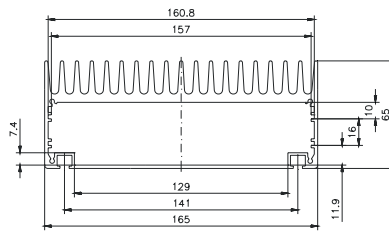
\* except for Multitronic 3 and 4

Version



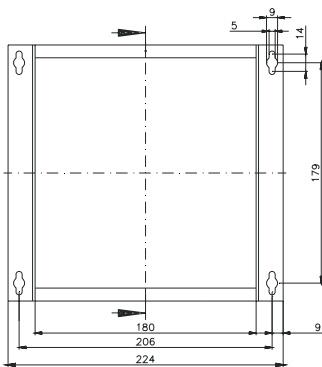
**Multitronic 1**

Order No. 77.31 00 00



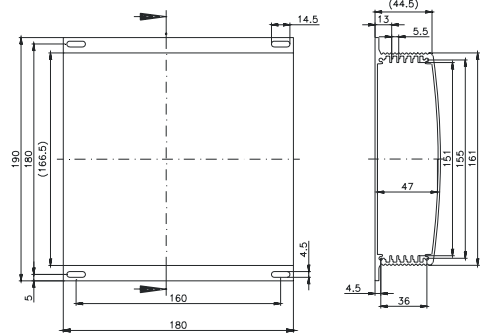
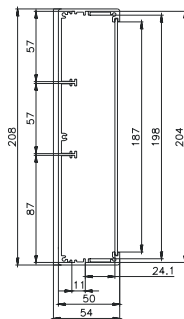
**Multitronic 2**

Order No. 77.32 00 00



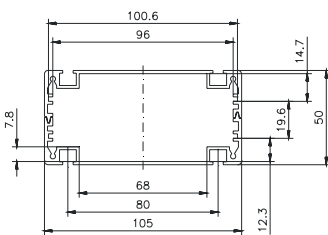
**Multitronic 3**

Order No. 77.33 00 00



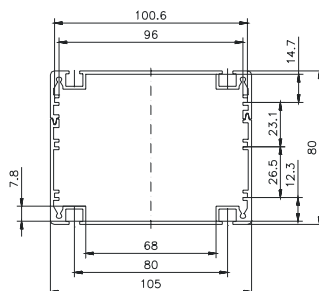
**Multitronic 4**

Order No. 77.34 00 00



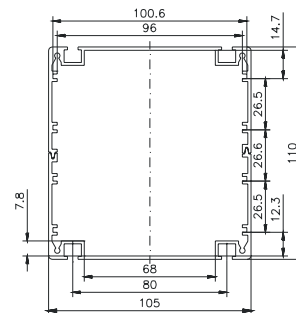
**Multitronic 11**

Order No. 77.11 00 00



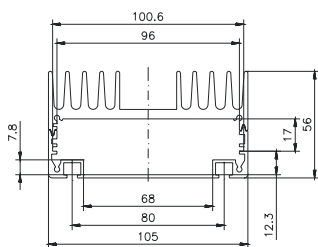
**Multitronic 12**

Order No. 77.12 00 00



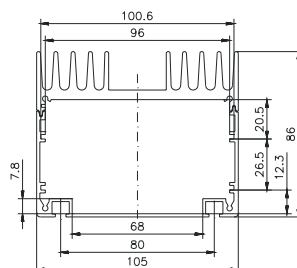
**Multitronic 13**

Order No. 77.13 00 00



**Multitronic 21**

Order No. 77.21 00 00



**Multitronic 22**

Order No. 77.22 00 00

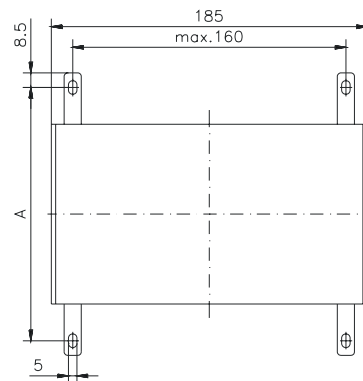
## Accessories



**External mounting brackets**  
for wall mounting on Multitronic 1, 11 - 22 and 2

Order No. **77.00 01 00**

	A
Multitronic 1; 11-22	123
Multitronic 2	184



**Snap foot, plastic**  
for rail mounting on TS 35

Order No. **77.00 35 01**

