



- Stainless steel round tube system with system components for hygienic applications
- Tube diameter 48 and 60 mm
- Tube version S-, J- and I-shape
- Components screwed to tube
- Optional EMC version

### Technical data

#### Material:

tube: stainless steel 1.4301

system components: stainless steel 1.4305

#### Ingress protection:

IP 65 to EN 60529

#### Free cable passage:

GTH 48: 41 mm

GTH 60: 53 mm

#### Surface:

tube: grinded, grain 240

#### Temperature range:

-25°C to +60°C

#### Included in delivery:

System components and tube mounted if ordered

# GTH 48 / GTH 60 suspension systems

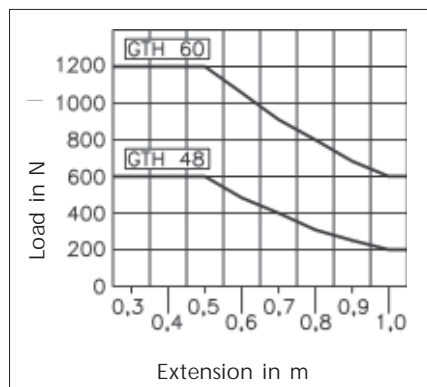
## Programme range

GTH 48		GTH 60		
Order No.	Weight (g)	Order No.	Weight (g)	
57.01 73 00	2560	57.02 73 00	3440	Coupling
57.01 73 01	2560	57.02 73 01	3440	EMC coupling
57.01 73 02	2710	57.02 73 02	3600	Coupling for external tube fitting
57.01 66 00	2450	57.02 66 00	3360	Top-mounted joint
57.01 66 01	2450	57.02 66 01	3360	EMC top-mounted joint
57.01 66 02	2700	57.02 66 02	3550	Top mounted joint for external tube fitting
57.01 74 00	1390	57.02 74 00	2490	Foot stand (hanging / standing)
57.01 72 00	3080	57.02 72 00	3720	Foot stand with cable outlet (hanging / standing)
57.01 76 00	1120	57.02 76 00	1220	Console adapter
57.01 76 01	1120	57.02 76 01		Console adapter hygiene
57.01 79 00	2680	57.02 79 00	3190	Wall console
57.01 00 05	1800	57.02 00 05	2300	Tube I (500 mm)
57.01 00 10	3450	57.02 00 10	4650	Tube I (1000 mm)
57.01 00 15	5100	57.02 00 15	6900	Tube I (1500 mm)
57.01 00 99		57.02 00 99		Tube I special length
57.01 02 05	3250	57.02 02 05	4300	Tube S (500 mm)
57.01 02 10	4800	57.02 02 10	6850	Tube S (1000 mm)
57.01 02 99		57.02 02 99		Tube S special length
57.01 01 05	3300	57.02 01 05	4380	Tube J (500 mm)
57.01 01 07	5700	57.02 01 07	6350	Tube J (750 mm)
57.01 01 10	9500	57.02 01 10	9300	Tube J (1000 mm)
57.01 01 99		57.02 01 99		Tube J special length
57.00 99 00		57.00 99 00		System mounting

## Accessories

	GTH 48	GTH 60
Protective cap set (4 caps) for top-mounted joint and foot stand	57.00 99 01	57.00 99 01
Spare blind flange	57.01 99 02	57.02 99 00

## Load diagram



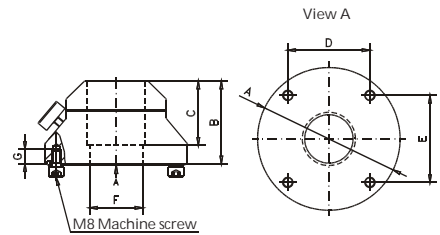
# GTH 48 / GTH 60 suspension systems

## Product description / Dimensions

### Coupling

for attachment of stainless steel tubes 48 or 60 mm.  
Pivot, can be locked at any point using clamping screw.  
Swivel range: up to 350°, can be adjusted in 60° steps.  
Included in delivery: Coupling includes mounting screws

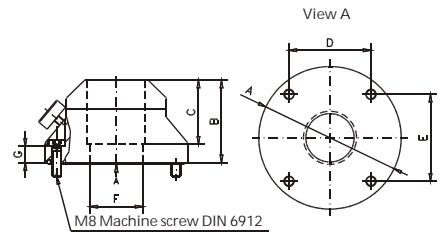
Order No.	Version	for tube	A	B	C	D	E	F	G
GTH 48									
57.01 73 00	Standard	Ø 48	Ø 118	70	53	68	72	Ø 44	13
57.01 73 01	EMC	Ø 48	Ø 118	70	53	68	72	Ø 44	13
57.01 73 02	for external fitting	Ø 48	Ø 118	82	65	68	72	Ø 44	13
GTH 60									
57.02 73 00	Standard	Ø 60	Ø 130	81	64	85.8	68	Ø 53	13
57.02 73 01	EMC	Ø 60	Ø 130	81	64	85.8	68	Ø 53	13
57.02 73 02	for external fitting	Ø 60	Ø 130	92	75	85.8	68	Ø 53	13



### Top-mounted joint

for attachment of stainless steel tube, 48 or 60 mm.  
Pivot can be locked at any point using clamping screw.  
Swivel range: up to 350°, can be adjusted in 60° steps.  
Included in delivery: top-mounted joint without M8 cylinder head screw

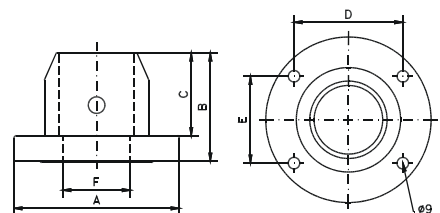
Order No.	Version	for tube	A	B	C	D	E	F	G
GTH 48									
57.01 66 00	Standard	Ø 48	Ø 118	70	53	68	72	Ø 44	13
57.01 66 01	EMC	Ø 48	Ø 118	70	53	68	72	Ø 44	13
57.01 66 02	for external fitting	Ø 48	Ø 118	82	65	68	72	Ø 44	13
GTH 60									
57.02 66 00	Standard	Ø 60	Ø 130	81	64	85.8	68	Ø 53	14
57.02 66 01	EMC	Ø 60	Ø 130	81	64	85.8	68	Ø 53	14
57.02 66 02	for external fitting	Ø 60	Ø 130	92	75	85.8	68	Ø 53	14



### Foot stand

for base- or ceiling mounting. Ceiling mounting version - additional safety bore for tube.  
Included in delivery: foot stand

Order No.	Version	for tube	A	B	C	D	E	F
GTH 48								
57.01 74 00	Foot stand (hanging / standing)	Ø 48	Ø 118	80	60	68	72	Ø 41.9
GTH 60								
57.02 74 00	Foot stand (hanging / standing)	Ø 60	Ø 130	85	60	85.8	68	Ø 53.9

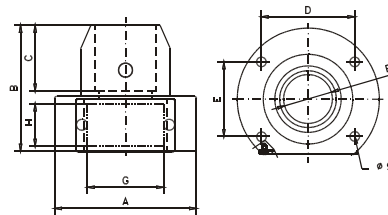


# GTH 48 / GTH 60 suspension systems

## Foot stand with cable outlet

for external cable outlet on side. Ceiling mounting version - additional safety bore for tube.  
Included in delivery: foot stand with flange plate and 2 screws

Order No.	Version	for tube	A	B	C	D	E	F	G	H
GTH 48										
57.01 72 00	Foot stand	Ø 48	Ø 118	110	60	68	72	Ø 41.9	45	38.5
(hanging / standing)										
GTH 60										
57.02 72 00	Foot stand	Ø 60	Ø 130	115	60	85.8	68	Ø 53.9	70	38.5
(hanging / standing)										



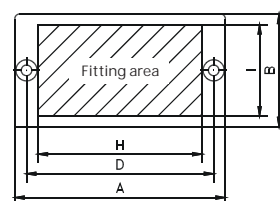
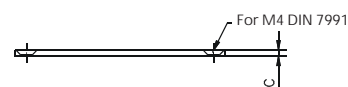
## Spare blind flange

for foot stand with cable outlet

Material: 1.4301

Included in delivery: blind flange without M4 countersunk screw

Order No.	A	B	C	D	H	I
GTH 48						
57.01 99 02	73	47.5	2.5	55	45	38.5
GTH 60						
57.02 99 00	90	48	2.5	80	70	38.5



Max. number of cable glands/ blind flange:

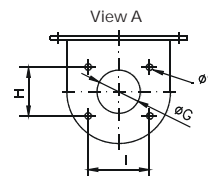
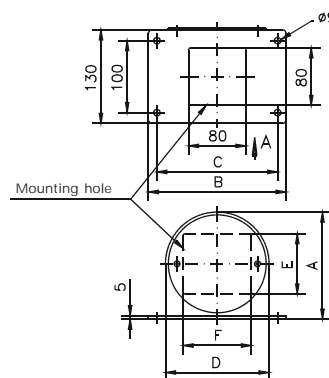
57.01 99 02: 1 x 25 or 1 x 20 or 4 x M12

57.02 99 00: 1 x 25 or 2 x 20 or 6 x M12

## Wall bracket

for adaption top mounted joint or coupling

Order No.	for tube	A	B	C	D	E	F	G	H	I
GTH 48										
57.01 79 00	Ø 48	138	178	155	132	88	84	50	72	68
GTH 60										
57.02 79 00	Ø 60	149	191,5	168	144	84	102	60	68	85,8

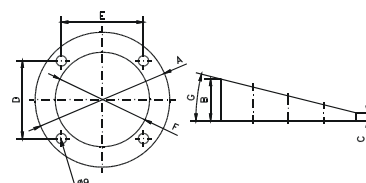


## Console adapter

Angle of inclination 14°

Included in delivery: console adapter with 4 fastening screws

Order No.	for tube	A	B	C	D	E	F	G
GTH 48								
57.01 76 00	Ø 48.3	Ø 118	40	10.6	68	72	Ø 79	14°
GTH 60								
57.02 76 00	Ø 60.3	Ø 130	40	7.6	68	85.8	Ø 91	14°

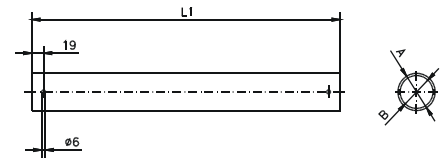


# GTH 48 / GTH 60 suspension systems

## Connecting tube I

Order No.	L1 (mm)	A (outside Ø)	B (inside Ø)	Weight (g)
GTH 48				
57.01 00 05	500	48.3	41	1800
57.01 00 10	1000	48.3	41	3450
57.01 00 15	1500	48.3	41	5100
57.01 00 99	special length	48.3	41	-
GTH 60				
57.02 00 05	500	60.3	53	2300
57.02 00 10	1000	60.3	53	4650
57.02 00 15	1500	60.3	53	6900
57.02 00 99	special length	60.3	53	-

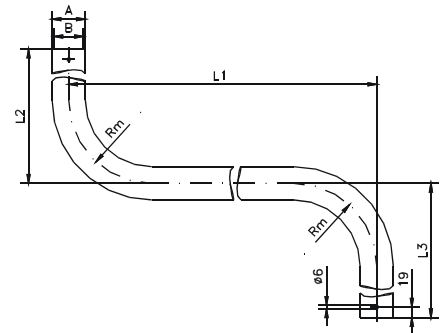
max. length L1 = 1000 mm



## Connecting tube S

Order No.	L1 (mm)	L2 (mm)	L3 (mm)	A (outside Ø)	B (inside Ø)	Weight (g)
GTH 48						
57.01 02 05	500	300	300	48.3	41	3250
57.01 02 10	1000	300	300	48.3	41	4800
57.01 02 99	special length			48.3	41	-
GTH 60						
57.02 02 05	500	300	300	60.3	53	4300
57.02 02 10	1000	300	300	60.3	53	6850
57.02 02 99	special length			60.3	53	-

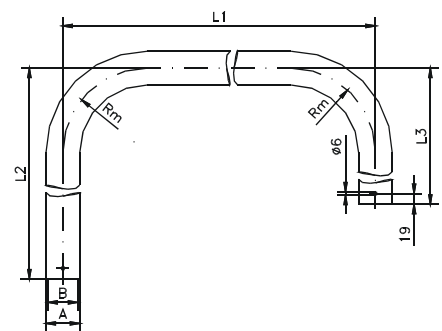
max. length L1 = 1000 mm



## Connecting tube J

Order No.	L1 (mm)	L2 (mm)	L3 (mm)	A (outside Ø)	B (inside Ø)	Weight (g)
GTH 48						
57.01 01 05	500	300	300	48.3	41	3300
57.01 01 07	750	750	300	48.3	41	5700
57.01 01 10	1000	750	300	48.3	41	9500
57.01 01 99	special length			48.3	41	-
GTH 60						
57.02 01 05	500	300	300	60.3	53	4380
57.02 01 07	750	750	300	60.3	53	6350
57.02 01 10	1000	750	300	60.3	53	9300
57.02 01 99	special length			60.3	53	-

max. length L1 = 1000 mm



### Product info:

Individual lengths and versions on request.

# GTH 48 / GTH 60 suspension systems

Enquiry

Order

Please copy, complete and fax: +49 (0) 571/5041-6

Company \_\_\_\_\_ Telephone \_\_\_\_\_

Contact \_\_\_\_\_ Fax \_\_\_\_\_

Address \_\_\_\_\_ E-Mail \_\_\_\_\_

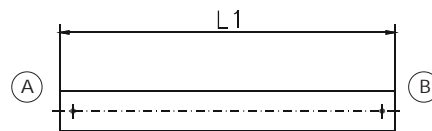
Suspension system  GTH 48  GTH 60 Quantity \_\_\_\_\_

System consisting of the following components:

## Components, side A

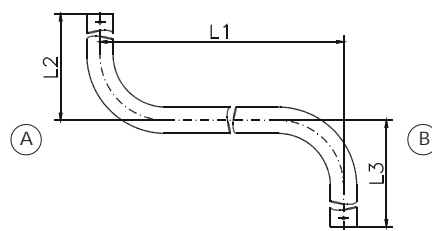
- Coupling
- EMC coupling
- Coupling for external tube fitting
- Top-mounted joint
- EMC top-mounted joint
- Top-mounted joint for external tube fitting
- Foot stand
- Foot stand for ceiling mounting
- Foot stand with cable outlet
- Foot stand (ceiling mounting) with cable outlet
- Console adapter
- Wall console

## Connecting tube



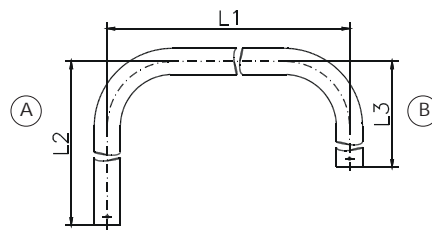
I-tube (L1)

- 500 mm
- 1000 mm
- 1500 mm
- Special length \_\_\_\_\_ mm



S-tube (L1/L2/L3)

- 500/300/300 mm
- 1000/300/300 mm
- Special length\* \_\_\_\_\_ / \_\_\_\_\_ / \_\_\_\_\_ mm



J-tube (L1/L2/L3)

- 500/300/300 mm
- 750/750/300 mm
- 1000/750/300 mm
- Special length\* \_\_\_\_\_ / \_\_\_\_\_ / \_\_\_\_\_ mm

\* Attention: measure dimension tube center  
min. lengths L2 and L3: 280 mm  
max. lengths L1 = 1000 mm

## Components, side B

- Coupling
- EMC coupling
- Coupling for external tube fitting
- Top-mounted joint
- EMC top-mounted joint
- Top-mounted joint for external tube fitting
- Foot stand
- Foot stand for ceiling mounting
- Foot stand with cable outlet
- Foot stand (ceiling mounting) with cable outlet
- Console adapter
- Wall console

## Accessories

- Protective cap set
- Spare blind flange untreated
- Spare blind flange treated \_\_\_\_\_