



- Industrial square suspension system with open cable duct for heavy loads
- Modular construction with freely accessible cable duct
- Floor, top-mounting or wall exit options

Technical data

Material:

connecting tube: square ST 37 similar to
 DIN EN 10305-5, wall thickness 5 mm and/or 8 mm
 components: spheroidal graphite cast iron and/or
 cast aluminium
 cable duct / cover: aluminium extruded profile
 bearing: ball bearing
 corrugated duct: textile fabric

Seals:

CR and/or NBR

Colour:

cable duct / cover:
 powdered, light grey, RAL 7035
 components:
 powdered, traffic grey B, RAL 7043
 special colour on request

Ingress protection:

IP 65, EN 60529
 on with connection of top-mounting flange/
 enclosure

Free cable passage:











57 cm²

Included in delivery:

Individual system components incl. cable
 duct covering and assembly materials

GTK 80

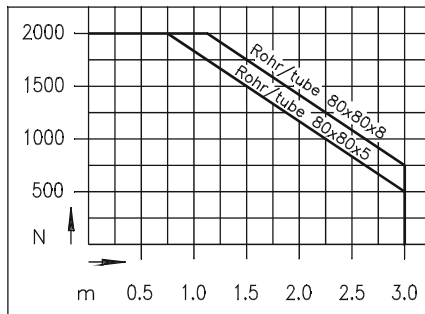
Product range

		Order No.	Weight (kg)
Top-mounted joint		49.90 66 01	20.2
Foot stand / wall flange		49.90 74 01	6.0
Wall hinge		49.90 70 01	17.5
Intermediate joint		49.90 67 01	14.0
Angle (FH) cast iron		49.90 71 11	9.1
Angle (AS) aluminium		49.90 71 20	3.9
Angle coupling		49.90 75 01	4.2
Coupling		49.90 73 01	3.9
Top-mounting flange type A		49.90 00 30	1.1
Top-mounting flange type B		49.90 00 20	1.1

	Cable duct (standard length to fit relevant suspension tube)	Suspension tube 80 x 80 x 5 mm	Suspension tube 80 x 80 x 8 mm
Standard length: 0.5 m	10.09 42 35	10.09 42 27	10.09 42 31
Standard length: 1 m	10.09 42 36	10.09 42 28	10.09 42 32
Standard length: 2 m	10.09 42 37	10.09 42 29	10.09 42 33
Standard length: 3 m	10.09 42 38	10.09 42 30	10.09 42 34
Variable length (please specify)	10.09 41 65*	10.09 41 59	10.09 41 68

* The cable duct needs to be 175 mm shorter than the suspension tube length!

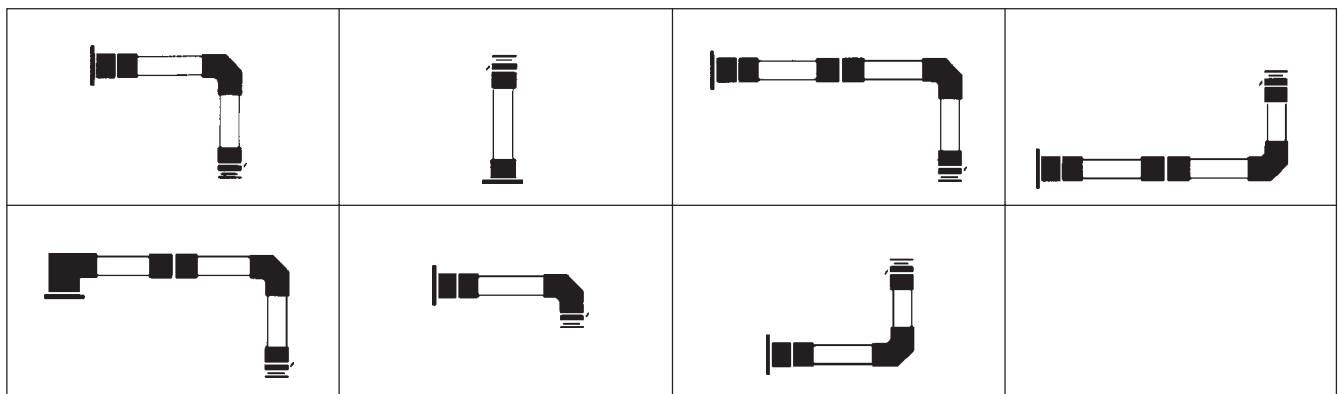
Load diagram



Note: the vertical length of the profile is responsible for the load of the complete suspension system (lever arm!). Further information for this on request. The values in the above load diagram are guilty to an execution hanging or standing. The declarations of weight are a summary from installation weight, COMMANDER and all components and tubes between COMMANDER and angle.

static load

Added system elements



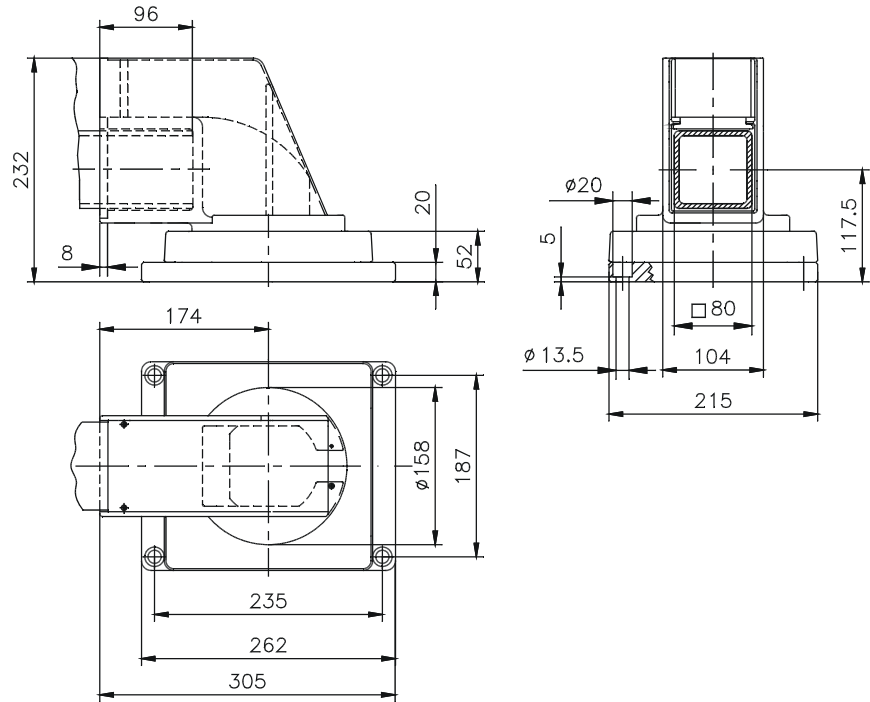
System components



Top-mounted joint

Cast iron. Fastening and adjustment on suspension tube with olive rings. Permanent easy-running ball bearing. Friction force of swivel movement is adjustable. Easy cable routing thanks to open cable duct. Swivelling range approx. 360°

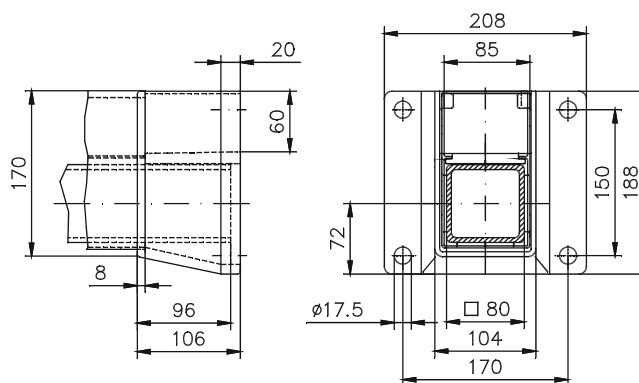
Order No. 49.90 66 01



Foot stand/wall flange

Cast iron. Fastening and adjustment on suspension tube with olive rings. Mounting options: Vertical (foot stand), horizontal (fixed wall mounting) or suspended (ceiling mounted). Easy cable routing thanks to open cable duct.

Order No. 49.90 74 01



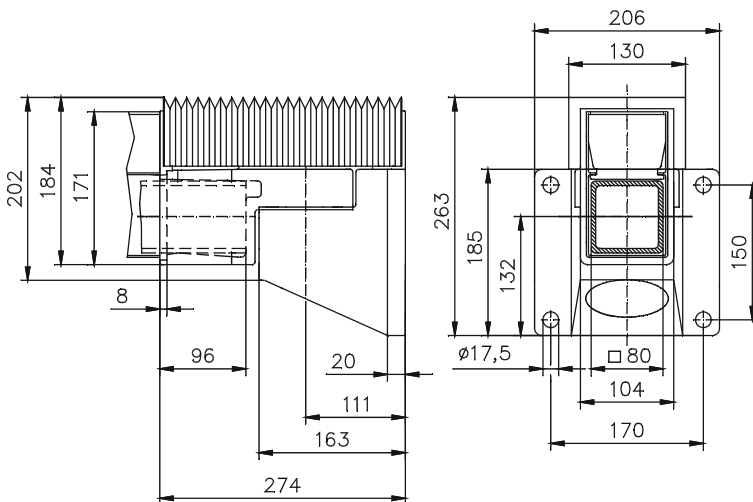
System components



Wall hinge

Cast iron. Fastening and adjustment on suspension tube with olive rings. Permanent easy-running ball bearing. Friction force of swivel movement is adjustable. Easy cable routing thanks to open cable duct. Dust protection with woven corrugated duct. Swivelling range approx. 180°

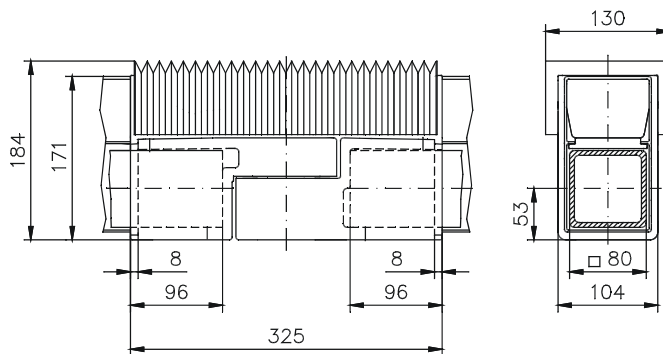
Order No. 49.90 70 01



Intermediate joint

Cast iron. Fastening and adjustment on suspension tube with olive rings. Permanent easy-running ball bearing. Friction force of swivel movement is adjustable. Easy cable routing thanks to open cable duct. Dust protection with woven corrugated duct. Swivelling range approx. 180°

Order No. 49.90 67 01



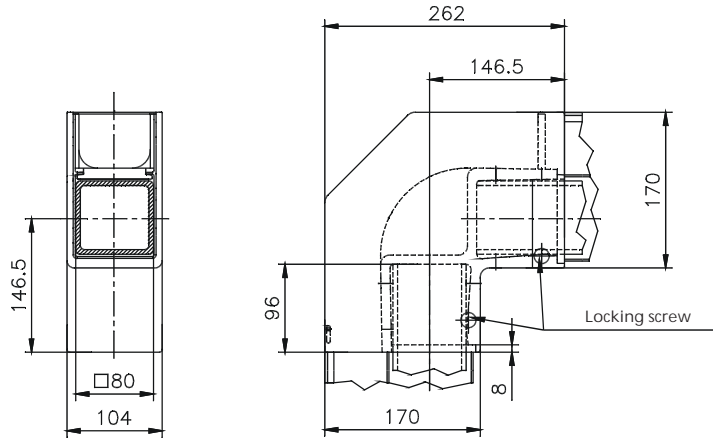
System components



Angle (FH)

Cast iron. 90° angle for use with high bending loads. Fastening and adjustment on suspension tube with olive rings. Additional safety screws for high vertical tensile loads. Easy cable routing thanks to open cable duct.

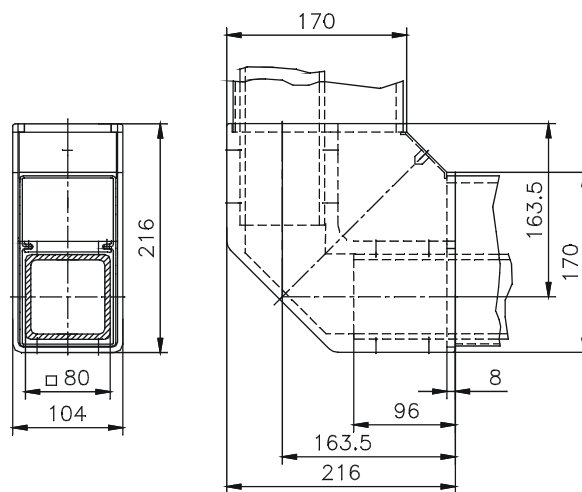
Order No. 49.90 71 11



Angle (AS)

Cast aluminium 90° angle for vertical construction from the bottom up with minimal bending load. Fastening and adjustment on suspension tube with olive rings. Easy cable routing thanks to open cable duct.

Order No. 49.90 71 20



System components

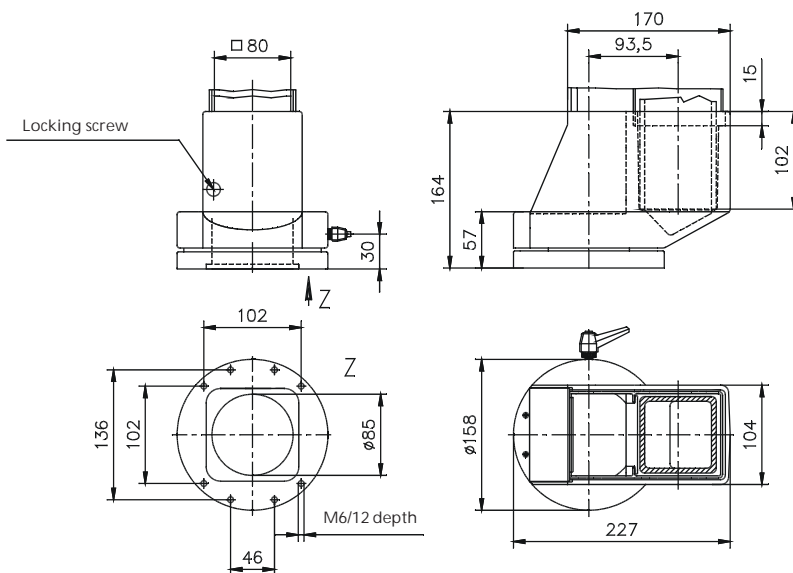


Coupling

Cast aluminium Large surface flange mounting on enclosure. Fastening and adjustment on suspension tube with olive rings. Permanent easy-running ball bearing. Swivel movement friction force can be adjusted with clamping lever. Easy cable routing thanks to open cable duct. Swivelling range approx. 320°

Caution: Custom flange fastening available for extremely heavy duty work!

Order No. 49.90 73 01

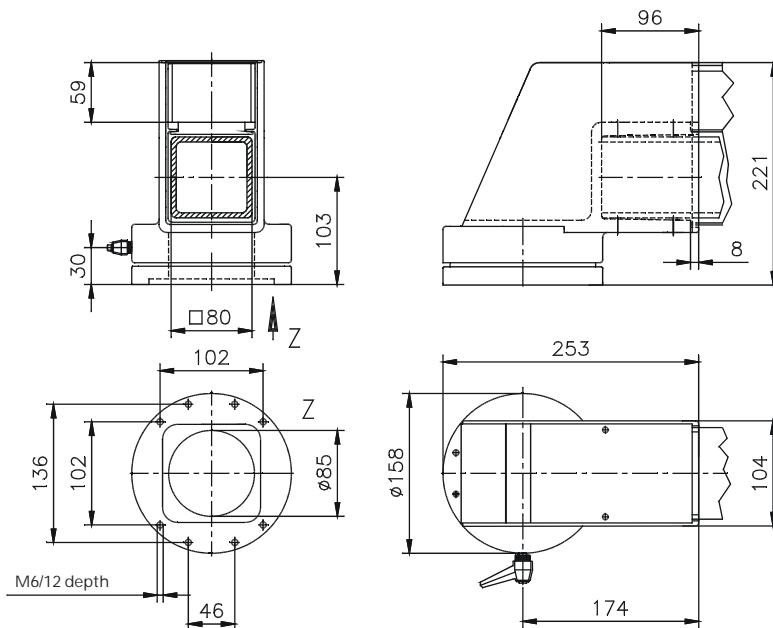


Angle coupling

Cast aluminium. Combination of coupling and angle. Large surface flange mounting on enclosure. Fastening and adjustment on suspension tube with olive rings. Permanent easy-running ball bearing. Swivel movement friction force can be adjusted with clamping lever. Easy cable routing thanks to open cable duct. Swivelling range approx. 320°

Caution: special flange fastening available for extremely heavy duty work!

Order No. 49.90 75 01



System components



Top-mounting flange

Fitted in combination with coupling or angle coupling to maintain compliance with enclosure rating IP 65 at transition to control panel.

Type A: Cast aluminium Large area mounting on enclosure for maximum 3 ready-made leads with diameters from 7 to 26 mm. Open cable entry.

Type B: Cast aluminium Large area mounting on enclosure for a large number of ready-made leads. Sealed with special cable glands or threaded cable connectors. Open cable entry.

Type A: Order No. **49.90 00 30**

Type B: Order No. **49.90 00 20**

