

Company \_\_\_\_\_  
 Contact \_\_\_\_\_  
 Address \_\_\_\_\_

Telephone \_\_\_\_\_  
 Fax \_\_\_\_\_  
 eMail \_\_\_\_\_

**Dimensions Operational enclosure**

Console versions, please also fill out the following page - „Console attachment enclosures“.

**Mounting depth**

T (mm) \_\_\_\_\_ of combination of profiles (please always specify from front to rear):

Profile no. \_\_\_\_\_ + Profile no. \_\_\_\_\_ + Profile no. \_\_\_\_\_ + Profile no. \_\_\_\_\_

Connection:  fixed  fixed  fixed  
 hinged  hinged  hinged  
 side \_\_\_\_\_ side \_\_\_\_\_ side \_\_\_\_\_

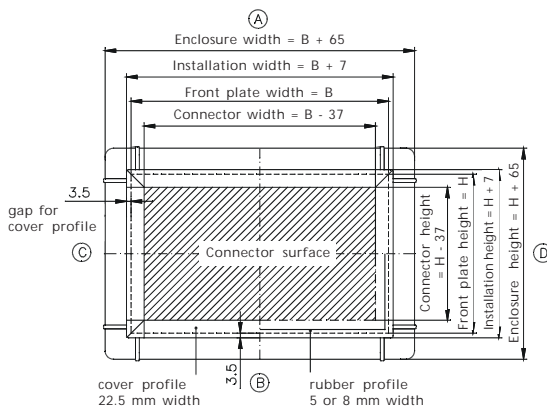
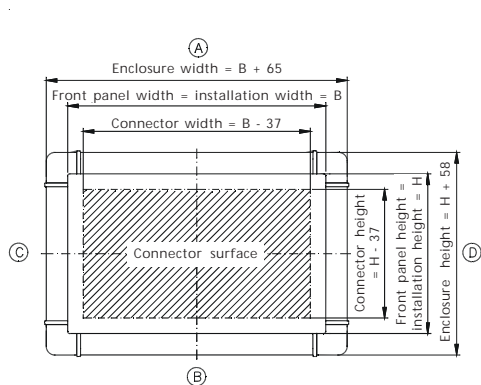
**Dimensions**

Please specify front panel dimensions W x H (mm) \_\_\_\_\_ x \_\_\_\_\_

and/or manufacturer/type \_\_\_\_\_

Version I  
 Front plate without cover profile or rubber profile

Version II  
 Front plate surrounding with cover profile or rubber profile



**Front plate**

- without front plate (direct mounting)  with M4 fixing set or  with M5 fixing set
- Front plate with stud bolts (flush without cover profile, dimensions, see drawing version I)
- Front plate with stud bolts (with cover profile, dimensions, see drawing version II)
- Front plate with drill holes
- Cover profile 22.5 mm (plastic black, dimensions s. version II)
- Cover profile for front plate, 5 mm rubber (Version II)
- Cover profile for front plate, 8 mm rubber (Version II)
- other front plate \_\_\_\_\_
- Finish in accordance with drawing no.: \_\_\_\_\_ (please attach)
- and/or specify manufacturer/controller type: \_\_\_\_\_
- Separation fin quantity Position in accordance with drawing-no.: \_\_\_\_\_

Accessories SL 3000 for enquiry/ order

Company \_\_\_\_\_

Rear panel

- with straight closure  screwed  hinged, hinges side \_\_\_\_\_
- with rounded closure  screwed, flush  with stud bolts, flush
- Modified according to drawing-no. \_\_\_\_\_ (please enclose if available)

Lock types

- Square 8 mm (Standard)
- Square 7 mm  Triangular 7 mm  Triangular 8 mm
- Double ward 3 mm  Other \_\_\_\_\_

Colour

- Standard:  Profile RAL 7035, corner pieces RAL 9006, corner caps RAL 7035 powder-coated or
- Natural anodized profile, corner pieces RAL 9006, corner caps RAL 9007 powder-coated
- Special colours (please specify RAL colour for each):
- Profile RAL \_\_\_\_\_ Corner pieces RAL \_\_\_\_\_ Corner caps RAL \_\_\_\_\_

Suspension system

- GTK electronic, side \_\_\_\_\_  GT 48/2, side \_\_\_\_\_
- GT 50/2, side \_\_\_\_\_  GT 60/2, side \_\_\_\_\_  GT 80/2, side \_\_\_\_\_
- GTN, side \_\_\_\_\_  GTK 80, side \_\_\_\_\_ (not Profile 1)
- Moterm  Moterm with console
- Connection to console connector
- Connection to profile
- Other \_\_\_\_\_ Drawing-no.: \_\_\_\_\_ side \_\_\_\_\_
- Total weight of fittings approx. \_\_\_\_\_ kg
- for profile combination:** Coupling hole on profile no. \_\_\_\_\_ or optional
- specify weight distribution \_\_\_\_\_

Handle set

- Quantity \_\_\_\_\_ side \_\_\_\_\_  Special colour RAL \_\_\_\_\_

Other accessories

- Disc drive-/interface bay with flap (as for SL 2000), side \_\_\_\_\_
- Insert bay for disk drive (from 415 mm front panel height), side \_\_\_\_\_
- Insert slot for: \_\_\_\_\_ side \_\_\_\_\_
- Finish in accordance with drawing-no.: \_\_\_\_\_
- For Siemens disk drive

Other modifications/ special versions

Further modifications \_\_\_\_\_

\_\_\_\_\_

in accordance with drawing-no.: \_\_\_\_\_

Drawing no.: D-SL 3000 - \_\_\_\_\_ Bl. 2

stated by Rose profile length: width \_\_\_\_\_ mm height \_\_\_\_\_ mm

**Dimensions****Console attachment enclosures**

Company \_\_\_\_\_

**Mounting depth**

T (mm) \_\_\_\_\_ of combination of profiles (please always specify from front to rear):

Profile no. \_\_\_\_\_ + Profile no. \_\_\_\_\_

Connection:  fixed  hinged, page \_\_\_\_\_**Dimensions**Front panel total dimensions (dimension sheet s. operational enclosure) W x H (mm) \_\_\_\_\_ x \_\_\_\_\_  Version Iand/or manufacturer/type of controller \_\_\_\_\_  Version II**Front panel** without front panel (direct mounting)  with M4 fixing set or  mwith M5 fixing set Front panel with stud bolts (flush without cover profile, dimensions, see drawing version I) Front panel with stud bolts (with cover profile, dimensions, see drawing version II) Front panel with drill holes Cover profile 22.5 mm (plastic black, dimensions s. version II) Cover profile for front panel, 5 mm rubber (Version II) Cover profile for front panel, 8 mm rubber (VersionII) other front panel \_\_\_\_\_ Finish in accordance with drawing no.: \_\_\_\_\_ (please attach)

and/or specify manufacturer/controller type: \_\_\_\_\_

 Separation fin quantity Position in accordance with drawing-no.: \_\_\_\_\_**Rear panel**with straight closure  screwed  hinged, hinges side \_\_\_\_\_with rounded closure  screwed, flush  with stud bolts, flush Modified according to drawing-no. \_\_\_\_\_ (please enclose if available)**Lock types** square 8 mm (standard)  square 7 mm  double ward 3 mm triangular 7 mm  triangular 8 mm  Other \_\_\_\_\_**Colour**Standard:  Profile RAL 7035, corner pieces RAL 9006, corner caps RAL 7035 powder-coated or Natural anodized profile, corner pieces RAL 9006, corner caps RAL 9007 powder-coated Custom colours (please specify RAL colour for each):

Profile RAL \_\_\_\_\_ Corner pieces RAL \_\_\_\_\_ Corner caps RAL \_\_\_\_\_

**Console attachment set** Standard 30° Standard 50°**Handle set** Quantity \_\_\_\_\_ side \_\_\_\_\_  Special colour RAL \_\_\_\_\_**Other accessories** Disc drive-/interface bay with flap (as for SL 2000), page \_\_\_\_\_ Insert bay for disk drive (from 415 mm front panel height), page \_\_\_\_\_ Insert slot for: \_\_\_\_\_ side \_\_\_\_\_ Finish in accordance with drawing-no.: \_\_\_\_\_ For Siemens disk drive**Other modifications/ special versions**

Further modifications \_\_\_\_\_ in accordance with drawing-no.: \_\_\_\_\_

Drawing no.:

D-SL 3000 - \_\_\_\_\_ Bl. 3

stated by Rose

profile length: width \_\_\_\_\_ mm height \_\_\_\_\_ mm